

CLYDE HART MEMORIAL

COMPETITOR INFORMATION

NEW SMYRNA SPEEDWAY – NEW SMYRNA BEACH, FL

FEBRUARY 12-13, 2024



Event Information

Monday, February 12

- 7:30 Pit Credentials Opens
- 8:00 Hauler Load In
- 9:00 Tire Draw At Tire Building
- 9:00 Fuel & Registration Opens
- 9:15 Crew Chief Meeting
- 9:30 Tire Draw At Tire Building
- 9:30 Tech Begins By Assigned Time
- 2:25 ASA STARS First Practice
- 4:50 ASA STARS Second Practice
- 6:45 ASA STARS Final Practice
- 7:30 Racing Program Begins

Tuesday, February 13

- 10:00 Pits Open
 - 12:00 ASA Garage Opens
 - 1:00 Driver/Crew Chief Meeting
 - 2:00 Pre-Qualifying Tech Begins
 - 4:00 Spotters Meeting
 - 4:30 ASA STARS Qualifying
 - 6:00 ASA STARS LCG
 - 6:20 Grid Cars On Front
 - 6:30 Autograph Session
 - 7:15 Pre-Race Ceremonies
 - 8:00 Racing Begins
- Clyde Hart Memorial 200
Tour Modified 50 – 45 Minutes

Hauler Load In & Pit Ticket Sales

- Hauler load in begins on Monday at 8:00. Teams in the top 10 for 2023 points will go in first if at track. Teams arriving Sunday night & Monday morning stage in the campground off Hwy 44 (See Map Below) not on entrance road to pit gate or main parking lot, please do not block driveways/gates. Once unloaded haulers will be staged in the parking lot closest to the traffic light.
- Pit ticket sales will be open on Monday from 7:30-7 and Tuesday 11:00-until. Please fill out a team form and leave an open check for team members arriving separately.

Testing

- There is not a test ban for this event. Private tests are handled through the track office.

Work Area

- All teams will work from lower pit on Monday & Tuesday.**
- Teams parked in lower pit can work from their trailer
- Remaining teams will have assigned stalls on pit road. If you need to pit with someone let series know prior to the event. Pit stall assignments will be sent out Sunday night.

Golf Carts

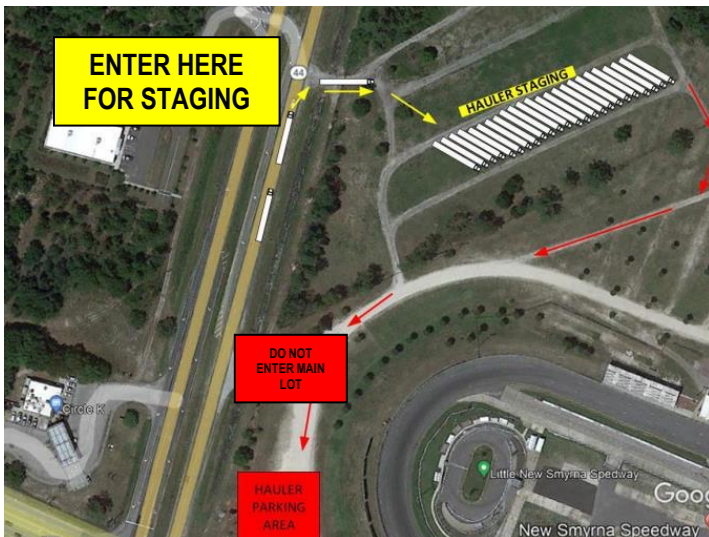
- Golf Carts/ATV's are allowed except on hot pit road. Use of vehicles can be revoked for reckless driving or blocking areas. One vehicle per team. Drivers must be at least 16 years old.

UPS/FEDEX

- If you need to ship items to the race track the address is 3939 Hwy 44, New Smyrna Beach, FL 32168. Packages will be in the pit office booth for pickup.

Contact Info

- Track Office - 386-427-4129
- Joe Balash ASA Dir. Race Oper. – 704-507-3909
- Tim Bryant SSS Promoter – 850-217-0539
- Nicholas Rogers SSS Comp. Director – 850-418-0559
- Scott Menlen ASA Race Director - 586-201-0378
- Freddie Query ASA Head Tech – 704-905-5907
- Hoosier Race Tire South – 336-403-3275



Hauler Staging Map

General Procedures

- This event is being conducted using 2024 ASA National/SSS event rules.
- **Driver & Owner must have an ASA license to compete.**
- No cellphones, smart watches or blue tooth devices allowed in cars at any time. This would be an automatic disqualification.
- **No tape allowed on the car except grill screen & front brake ducts. Must have lower 3" of grill screen open.**
- No cool down units of any type permitted and will be subject to severe penalty.
- All cars will tech at their assigned time on Monday. We will do in undercar tech in pits stall.
- All tech issues must be fixed and marked off by 1:30 on Tuesday or possible penalty of the slowest of qualifying laps.
- You will draw for tire stacks at 9:30am Monday in the tire building. If you are not present, we will draw for you.
- **For qualifying order, we will combine 2nd & 3rd practice times with qualifying order being reverse of these combined times.**
- Must purchase a minimum of 20 gallons of fuel before qualifying. Sunoco 110 is spec fuel for this event.
- All tires in impound must be stacked 4 high when not working them or you could face penalties. The only items allowed in impound are a tire gauge, tire tape & air hose. All wheels must have car number decal on them.
- Must run an ASA windshield banner and all required contingency decals.
- It is mandatory that all cars have a spotter. Spotter must have the ability to monitor race control anytime car is on the track with either a scanner or separate radio. Spotters that cannot monitor race control could result in car being black flagged. Race control frequency for this event is 461.2000.
- In the event of rain, we will use 2023 Car Owner points final order then order of entry to set the field.
- No crew members are allowed on the racing surface anytime the track is hot unless given permission by an official. This can result in crew member being removed from the pits.
- No scuffing tires on pit road or around safety workers on the track at any time. You will be parked after one warning.
- All lead must be securely fastened & painted white with a car number on all sides. Lead will be inspected pre- and post-race. If not painted and numbered, you will face penalties as outlined in the rule book.
- **A muffler must be installed limiting car to a maximum of 99db at all times. Penalties will apply for any car over 99db.**

Tire Procedures

- Tire selection will be done by draw for numbered tire stacks on Monday at 9:30am in the tire building. If you are not at track an official will draw for you.
- Each team will be allowed to purchase up to two sets of sticker tires for use during practice. Teams can bring one set of tires to be used during the first 25 minutes of the first practice.
- Monday – Teams will draw for tire stacks. Teams can mount and take practice tires. Qualifying/Race tires remain in impound.
- Tuesday – Qualifying tires will remain in impound until qualifying tech. Race tires will be released after cars are gridded for autograph session.
- Teams should only have the four marked practice tires that will be used for emergency spares and the four marked race tires in their pit area at the start of the event.

Event Notes

- No personal vehicles will be allowed in the pit area. Please plan accordingly to shuttle parts and supplies.
- In the event of inclement weather during the weekend's events some adjustments may be made to event procedures and schedule. If this occurs the primary team contact will be notified, and it will be announced during the drivers meeting.
- Due to supply chain issues the 1.500 minimum valve spring diameter rule will not be enforced for this event. This rule will go into effect March 1, 2024.

2024 Rule Changes

- The lower 3" of grill screen must be open at all times.
- A full width opening deck lid is required.
- Air filter height is a maximum of 4".
- Carburetor restriction height must match the size of the plate.
- All oil pump stages must be straight tooth or rotor with maximum 3 lobes. No high helix pumps allowed.
- No intakes may be painted or coated.
- No valves springs less than 1.500 OD (Beginning March 1, 2024).
- Sealed engines are allowed 1" carb spacer max.
- Fuel cells must be attached with a minimum of .375" bolts.
- Fuel cell sides must be symmetrical.
- Maximum of 1 brake blower/fan per side, front brakes only
- No digital radios allowed in the car.
- Safety net must have a minimum SFI rating of 27.1.
- Helmet must be a minimum of 2015 Snell.



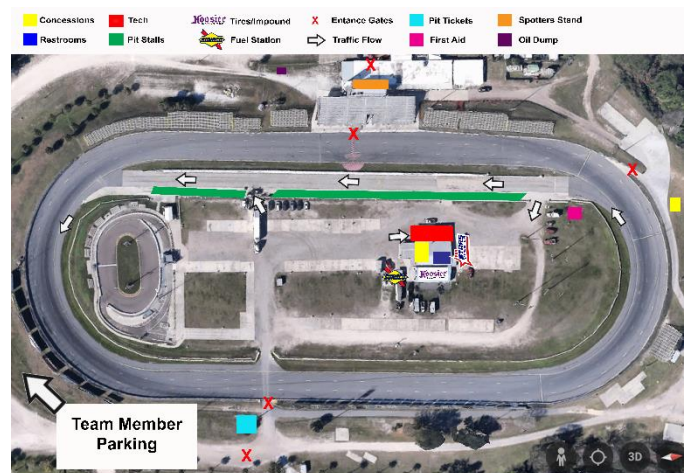
Monday February 12th

- Hauler load in begins at 8:00.
- All teams will work from the lower pit for this event. Teams already pitted in lower pit can work from trailer. All others will be on pit road.
- We will stage haulers on pit road and in the infield for you to unload equipment and take to assigned pit stall.
- Pit stalls will be assigned for those working on pit road.
- Teams will share a pit box. Cars must be at a 45-degree angle.
- Once unloaded haulers will go to staging area in main parking lot.
- Crew Chief meeting is at 9:15.
- Pre-tech begins at 9:30 and will be by assigned times. This will be emailed to primary contact prior to the event.
- You will pick up transponders from the registration trailer. Transponders are required any time you are on track.
- You can use any tire for the first 25 minutes of practice. After the mid-way break you must be on event marked tires.

Tuesday February 13th

- ASA garage and track services will open at 12:00
- Mandatory Driver/Crew Chief/Spotter meeting is at 1:00
- All issues in pre-tech must be corrected and rechecked by 1:30 or possible penalties.
- We will release qualifying tires to the cars at 1:45
- Pre-Qualifying tech begins at 2:00. All cars are required to be on the ground ready to roll to tech at that time unless on an approved mechanical waiver by tech.
- You will have two opportunities to pass tech before you are under penalty of the slowest of your two laps. You should have your ignition box clean with brake clean, sway bar set, and all taping done prior to pre-qualifying tech. An official will send you to tech in order.
- After tech no adjustments can be made other than air pressure. A maximum of 3 crew members and the driver with the car. You will be advised on generators in the drivers' meeting.
- Qualifying is dead lap first time by then green, white, checkered. Once you take the green you have a time. If you have an issue prior to taking the green you will be put on a 5-minute clock. You must be rolling to stop & go when that clock expires.
- If you spin prior to taking green you cannot go backwards on the track. You will come to green from where you spin. After taking the green, if you spin, you are allowed to go counter. Do not cross start/finish.
- You will be directed to impound at the conclusion of your lap. One crew member can remove tape, check air pressure and check stagger with a stagger stick only. Crew and driver must stay with car to push up.

- Following qualifying cars will not be allowed out of impound. Safety items will be dealt with on a case by case basis. Anyone that must pull out of impound will face possible penalties including starting laps down or being required to run the LCQ.
- Cars running the LCQ will remain in impound. We will grid the cars at stop and go as they are bumped during qualifying. Teams will be allowed to set air pressure and add driver items only. Teams that transfer to the main will be allowed to purchase new tires for the feature. Teams also have the option to run marked, scuffed, event practice tires in the LCQ.
- Following LCQ we will grid cars on front strait.
- Teams can come to pit road when cars pull off of grid to make any needed adjustments. Penalty is to start on the tail.
- Mandatory autograph session at 6:30
- Driver intros at 7:15. Please be in uniform.
- Race is (8) tires max. You can have four marked scuffs from practice in your pits for approved flats only. Flats must be on the rim or must be inspected and approved by an official before the tire is touched by a crew member. An unapproved tires change will result in a two lap penalty per tire.
- You must pit on pit road. If you go behind the wall, you will not be allowed to return to competition.
- Pit stalls are first come first serve. Please be courteous of other divisions that will be using pit road.
- At the conclusion of the event the top 3 will go to the front straightaway for victory lane ceremonies. Fourth, fifth and any other requested car will go straight to tech. Driver must drive car to scales.
- No haulers will be allowed back into the pit area to load until all events are completed.
- Please make sure your transponder is returned.



Super Late Model Race Procedures

- 1. Event:** The race is 200 green flag laps. Series reserves the right to count cautions in certain situations including excess number of cautions. If a red flag is thrown once the leader has taken the white flag there will be a green, white, checker restart. The event is complete after three green, white, checker attempts.
- 2. Initial Start:** Flagman starts the race. Cars must stay in their lane until the finish line. No jumping a start or passing before the finish line. If a green flag lap is not completed on the initial start, there will be a total restart with all cars back in their original starting position except for any cars that are penalized, receive assistance or cars that pit.
- 3. Yellow Flag:** There will be no racing back to the caution. When the yellow flag is displayed, all cars must slow to a caution pace and bunch up as quickly as safety allows so safety crews can work on track. All cars must get single file and stay single file. Lineup disputes will be settled by race control. Failure to comply can result in penalties up to disqualification. No scuffing around workers on track. You will receive one warning, any further issues and you will be parked for the remainder of the event.
- 4. Cars Involved in the Caution:** Only car(s) directly involved in bringing out the caution will go to the tail of the field. Any cars that spin or stop but were not directly involved with the initial cause of the caution, will get their spots back if they do not receive assistance or go to pit road. Rough driving will not be tolerated. If contact with a car causes a yellow flag and the contact is not a "racing incident," that car will also be sent to the tail. Rough driving at any time can result in penalties including being sent to the tail of the field or possible disqualification from the event. If you stop on track or intentionally create a caution you will lose a minimum of two laps naturally or by penalty.
- 5. Pitting Procedure:** You must stay single file behind the pace car during the cautions unless you are coming to the pits. Please see controlled caution procedures for detailed instruction. Only traditional tools and procedures may be used during a pit stop. A maximum of 5 crew members allowed to service the car. Crew cannot go to their car until it is completely stopped in their pits. The pit road speed limit is 35mph, if a car goes over the limit, it will be black flagged for a stop and go penalty.
- 6. Restart:** Field will be set based off last completed lap. Restart Line-up will be lead lap cars that did not pit followed by lead lap cars that pitted and returned in allotted time. Lap cars will line up behind lead lap cars followed by cars under penalty with free pass on the tail. Restarts will always take place in the box coming off turn 4. The restarts will be double file and will use the choose rule described below for restart lineup. Field will choose at designated point just past finish line when instructed to by race control. Once the pace car leaves the field the leader can steadily increase their speed until the box. The leader must accelerate first once in the box. No slowing, weaving, brake checking or decrease in acceleration once the pace car leaves the field. The MINIMUM restart speed is 45 mph (may be adjusted at specific tracks). Cars must stay in their lane until the finish line. No jumping a start or passing before the start finish line. If a green flag lap is not completed before a yellow comes out all cars should go back to their prior position except for any cars that are penalized, receive assistance or pit.
- 7. Choose Rule:** On restarts, the lead car remains out front while all others line up single file behind the leader. Drivers will be notified by the flag man and race director that drivers will choose this lap. The leader has the option to choose either lane (high or low) and stay in that position. All cars behind the leader must choose the high (outside) or low (inside) lane for their restart. Drivers must select a lane upon reaching the cone and must stay in that lane until the green flag is displayed. Changing lanes after choosing will result in restarting at tail of longest line. Cars may gain positions by selecting the shortest lane. Free pass and any car under penalty must restart at the tail of the longest line. If a yellow occurs prior to the completion of a green lap the running order will revert to previous restart prior to drivers choosing unless directed otherwise by race control.
- 8. Stages:** All events will be broken into 3 points paying stages. Stage breaks will be controlled pit stop cautions.
- 9. Red Flag:** All cars must stop as quickly as safely possible when the red flag is displayed. Cars may go to the pits for crews to work on them, only after the spotter official has given them permission to do so. Cars pitting under red must restart at the tail of the field.
- 10. Black Flag:** Cars that receive the black flag must go to pit road immediately. If you do not go to pit road within 3 laps, your scoring will stop until the situation is rectified. Check with your spotter for guidance from race control.
- 11. Wave Around:** At the end of any caution period, any cars that are at the tail of the lead lap, behind the pace car but in front of the race leader will be "Waved Around" to pass the pace car and return to the tail of the lead lap cars, thus ensuring that the leader of the race will always start the race at the head of the field. Cars using the "Wave Around" cannot pit during that caution period.
- 12. Free Pass:** At the time the caution comes out, the first car behind the leader 1 lap down will be deemed to be the Free Pass (If free pass is the cause of the yellow then it would go to next car in line). Free pass will stay in their position throughout the caution period (Free Pass may pit if they elect to), until directed to pass the pace car or drop to the tail of the field and have your lap added manually. Free pass must always restart on the tail of longest line. No free pass will be awarded in the last 10 laps.
- 13. Slow Cars:** Slow cars will be advised in the drivers' meeting which lane to utilize in the presence of lead lap cars during the race. Lapped cars that create problems for lead lap cars may be penalized. Lapped cars should let the leaders go by on the preferred lane and then resume racing. Lapped cars that are repeatedly passed without giving the preferred lane during the race may be penalized. Cars fighting to stay on the lead lap are not forced to yield to the leaders until they have been passed by the leader.
- 14. Scoring:** Transponders will be used for scoring. Teams must return the transponder to a scoring official before leaving pit area...There is a \$400 PENALTY for failure to turn in your transponder.
- 15. Spotters:** Spotters are required to be in the designated spotters stand during racing activities. Only one spotter per team is allowed in the spotter stand, no guest. Spotters must have the ability to listen to race control via a standard electronic scanner or dedicated radio at all times during the event. The frequency is 461.2000. Drivers should keep your spotter's patient and polite; spotters keep your drivers the same. Tower will be monitoring during the race. Spotters must be respectful to officials and other spotters at all times. If the spotter leaves or is removed from the spotters stand car will be parked.
- 16. Post-Race:** The top three finishers go to the front-stretch immediately following the completion of the race. Fourth and fifth go straight to tech. Other cars may be requested to go directly to tech. Driver must drive car to tech after victory lane.
- 17. Controlled Cautions:** This event will use Controlled Cautions up to lap 140 unless declared a quickie yellow. You can only take tires during controlled cautions unless for an approved flat. A quickie yellow may be used if we have not completed 25 laps since the last controlled caution for an issue that can be cleared quickly. Controlled Cautions will consist of a 3-Lap grace period. Pace car will pick up field in turn 2. Pits are closed until the lineup is established. Once lineup is established race control will announce pit road open next time and pit open flagman will show green. You can enter pit road when you get to the entrance. Do not advance. That 3-lap grace period is only the first three laps that pit road is open after the cars have been brought to pit road. After the grace period, cars will lose positions. When pitting under a Controlled Caution, the cars that pit the first time by will return to the track in the same order they were scored running in the race prior to coming to pit road, relative to the other cars that pitted, and will line up behind the cars that did not pit, as long as they return to the track within the stated 3 lap window. Any car that returns to the track AFTER that 3-lap window will not get their position back and must fall to the tail of their lap. Any car that pits and does not return to the track prior to the field receiving the "one to go" signal must restart at the tail of all cars. A mandatory caution will be thrown at the end of any run of 50 consecutive green flag laps. There will be NO mandatory caution thrown in the last 10 laps.

*These procedures will be superseded by any procedures provided during the event.



***Thank you for being a part of
the Clyde Hart Memorial 200***



**Please support our partners that
help make this possible**

