



NORTH/SOUTH SUPER LATE MODEL CHALLENGE

COMPETITOR INFORMATION

NASHVILLE FAIRGROUNDS SPEEDWAY – NASHVILLE, TN

JULY 10/11, 2026



Event Information

Friday, July 10

- 12:00 Credential Office Opens
- 12:30 Hauler Parking
- 1:00 Garage Opens
- 1:15 SSS Crew Chief Meeting (Ignition/Qualifying/Tire Draw)
- 1:30 SLM Tech By Appointment
- 3:00 SLM Practice 1 – 20 minutes
- 4:00 SLM Practice 2 – 20 minutes
- 5:00 SLM Practice 3 – 20 minutes
- 6:00 SLM Practice 4 – 20 minutes

Saturday, July 11

- 10:00 Pit Gate Opens – Remaining SSS Tech
- 12:00 Driver/Crew Chief/Spotters Meeting
- 1:00 SLM Practice 1 – 30 minutes
- 1:55 SLM Practice 2 – 30 minutes
- 3:00 SLM Pre-Qualifying Tech
- 4:20 SLM Qualifying
- 4:50 Pre-Race Ceremonies
- 5:00 Racing Begins

Hauler Parking & Pit Ticket Sales

- Hauler parking begins on Friday at 12:00pm.
- DUE TO A CONCERT AT THE SOCCER STADIUM THERE WILL BE NO ON PROPERTY STAGING ON THURSDAY**
- Pit ticket sales will be open on Friday from 12:00am-7:00pm and Saturday from 10:00am-Until. Please fill out a team form and leave an open check for team members arriving separately. **Pit Pay is available for this event and highly encouraged.**

Testing

- The last day for private testing was June 25th.

Golf Carts

- Golf Carts/ATV's are allowed except on hot pit road. Use of vehicles can be revoked for reckless driving or blocking areas. Drivers must be at least 16 years old.

UPS/FEDEX

- If you need to ship items to the race track the address is 401 Wingrove St., Nashville, TN. 37203. Packages will be in the office for pickup.

Contact Info

- Track Office – 615-254-1986
- Tim Bryant SSS Series Director – 850-217-0539
- Anthony Tate NFS General Manager– 717-440-0225
- Nicholas Rogers SSS Comp. Director – 850-418-0559



General Procedures

- This event is being conducted using 2026 ASA CRA/ASA Southern Super Series event rules.
- **Driver & Owner must have an ASA license to compete.**
- No cellphones devices allowed in cars at any time. This would be an automatic disqualification. Watches are now allowed
- **No tape allowed on the car except grill screen & front brake ducts.**
- No cool down units of any type permitted and will be subject to severe penalty.
- All cars will tech at their assigned time on Friday.
- All tech issues must be fixed and marked off by end of practice Sat. or possible penalty is slowest of qualifying laps.
- You will draw for tire stacks at 1:15pm Friday during the Crew Chief meeting. If you are not present, we will draw for you.
- In the event qualifying is cancelled we will use 2026 SSS owner points then order of entry to set lineup.
- Must purchase a minimum of 10 gallons of fuel before qualifying. Sunoco 110 is spec fuel for this event.
- All tires in impound must be stacked 4 high when not working them or you could face penalties. The only items allowed in impound are a tire gauge, tire tape & air hose. All wheels must have car number decal on them.
- Must run a SSS windshield banner and all required contingency decals.
- It is mandatory that all cars have a spotter. Spotter must have the ability to monitor race control anytime car is on the track with either a scanner or separate radio. Spotters that cannot monitor race control could result in car being black flagged. Race control frequency for this event is 467.7875.
- No crew members are allowed on the racing surface anytime the track is hot unless given permission by an official. This can result in crew member being removed from the pits.
- No scuffing tires in pit area, on pit road or around safety workers on the track at any time. You can lose practice time or be parked after one warning.
- All lead must be securely fastened & painted white with a car number on all sides. Lead will be inspected pre- and post-race. If not painted and numbered, you will face penalties as outlined in the rule book. No lead can be removed or added during the feature event.
- Drivers are responsible for crew members actions at all times.
- **A muffler must be installed limiting car to a maximum of 99db at all times. Penalties will apply for any car over 99db.**

Tire Procedures

- Tire selection will be done by draw for numbered tire stacks on Friday at 1:15pm during the Crew Chiefs meeting. If you are not at track an official will draw for you.
- Tires will be in stacks of 8 with 4 ST-3* & 4 F-45*.
- Teams do not have to purchase all 8 tires
- Teams can mount and take practice tires only. Qualifying/Race tires will remain in impound.
- Qualifying tires will remain in impound until qualifying tech.
- Teams should only have four scuffed practice tires that will be used for emergency spares in their pit area during the event.

Event Notes

- All personal vehicles must be parked in the designated parking areas. No vehicles allowed in the infield
- In the event of inclement weather during the weekend's events some adjustments may be made to event procedures and schedule. If this occurs the primary team contact will be notified, or it will be announced during the drivers meeting.

Ignition Boxes

- All cars will be issued an ignition box by random draw at the crew chiefs meeting.
- This box must be used for all on track activities.
- Boxes will be sealed in qualifying tech line.
- Please return box at the conclusion of the event.

Friday July 10

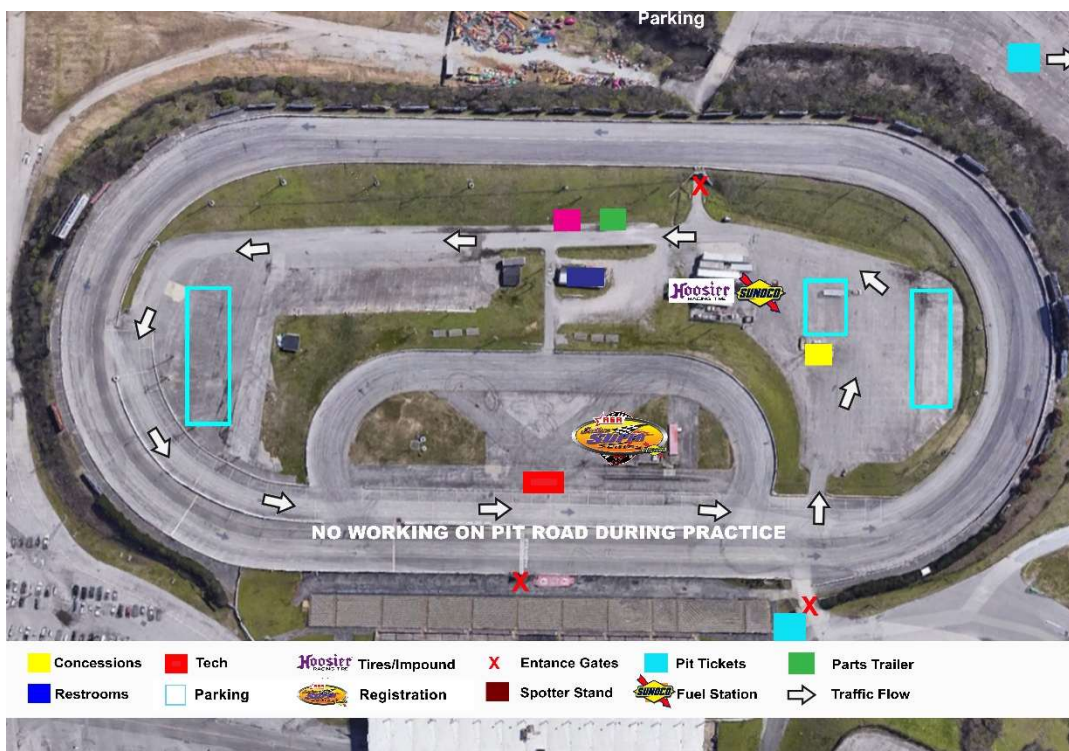
- Hauler parking begins at 12:30pm.
- Crew Chief meeting is at 1:15pm.
- We will draw for qualifying order, tires & ignition boxes at the crew chief meeting.
- You will pick up transponders from the SSS trailer. Transponders are required any time you are on track.
- Decal packs are available at the registration trailer. Window valance and required decals should be on the car prior to going on track for practice.

Saturday July 11

- Pit gate will open at 11:00am.
- Mandatory Driver/Crew Chief/Spotter meeting is at 12:30pm.
- We will release qualifying tires to the cars at 2:30pm.
- Pre-Qualifying tech begins at 3:00pm. All cars are required to be on the ground ready to roll to tech at that time unless on an approved mechanical waiver by tech.
- You will have two opportunities to pass tech before you are under penalty of the slowest of your two laps. You should have your sway bar set, and all taping done prior to pre-qualifying tech. An official will send you to tech in order.
- After tech no adjustments can be made other than air pressure. A maximum of 4 crew members and the driver with the car. No generators in impound.

Saturday July 11 Cont.

- **Qualifying will be green first time by then white, checked.** Once you take the white you have a time. If you have an issue prior to taking the white you will be put on a 5-minute clock. You must be rolling to stop & go when that clock expires.
- You will be directed to impound at the conclusion of your lap. One crew member can remove tape, check air pressure and check stagger with a stagger stick only.
- Following qualifying cars will not be allowed out of impound. Safety items will be dealt with on a case by case basis. Anyone that must pull out of impound will face possible penalties including starting laps down.
- When cars are gridded for their event teams can go to their pit stall to make any needed adjustments. Penalty is to start on the tail.
- Race is (4) tires max. You can have four scuffs from practice in your pits for approved flats only. Flats must be on the rim or must be inspected and approved by an official before the tire is touched by a crew member. An unapproved tires change will result in a two lap penalty per tire.
- You must pit on pit road. If you go to garage area, you will not be allowed to return to competition.
- Pit stalls will be first come first serve.
- At the conclusion of the event the top 3 will go to the front straightaway for victory lane ceremonies. Fourth, fifth and any other requested car will go straight to tech. Driver must drive car to scales.
- Please make sure your transponder & ignition box are returned



Super Late Model Race Procedures

- 1. Event:** The race is 100 green flag laps. Series reserves the right to count cautions in certain situations including excess number of cautions. If a red flag is thrown once the leader has taken the white flag there will be a green, white, checker restart. The event is complete after three g/w/c attempts.
- 2. Initial Start:** Flagman starts the race. Cars must stay in their lane until the finish line. No jumping a start or passing before the finish line. If a green flag lap is not completed on the initial start, there will be a total restart with all cars back in their original starting position except for any cars that are penalized, receive assistance or cars that pit.
- 3. Yellow Flag:** There will be no racing back to the caution. When the yellow flag is displayed, all cars must slow to a caution pace and bunch up as quickly as safety allows so safety crews can work on track. All cars must get single file and stay single file. Lineup disputes will be settled by race control. Failure to comply can result in penalties up to disqualification. **No scuffing around workers on track.** You will receive one warning, any further issues and you will be parked for the remainder of the event.
- 4. Cars Involved in the Caution:** Only car(s) directly involved in bringing out the caution will go to the tail of the field. Any cars that spin or stop but were not directly involved with the initial cause of the caution, will get their spots back if they do not receive assistance or go to pit road. Rough driving will not be tolerated. If contact with a car causes a yellow flag and the contact is not a "racing incident," that car will also be sent to the tail. Rough driving at any time can result in penalties including being sent to the tail of the field or possible disqualification from the event. If you stop on track or intentionally create a caution you will lose a minimum of two laps naturally or by penalty.
- 5. Pitting Procedure:** You must stay single file behind the pace car during the cautions unless you are coming to the pits. Pit road is open second time by for everyone unless blocked. Only traditional tools and procedures may be used during a pit stop. A maximum of 5 crew members allowed to service the car. Crew cannot go to their car until it is completely stopped in their pits. The pit road speed limit is 35mph, if a car goes over the limit, it will be black flagged for a stop and go penalty. You can only take tires for an approved issue. Must be a scuffed practice tire.
- 6. Restart:** Field will be set based off last completed lap. Restart Line-up will be lead lap cars that did not pit followed by lead lap cars that pitted and returned in allotted time. Lap cars will line up behind lead lap cars followed by cars under penalty with free pass on the tail. Restarts will always take place in the box coming off turn 4. The restarts will be double file with the leader only having choice. **Once the pace car leaves the field the leader will maintain pace car speed until the box.** The leader must accelerate first in the box. No slowing, weaving, brake checking or increase/decrease in acceleration once the pace car leaves the field. The restart speed is 45 mph (may be adjusted at specific tracks). Cars must stay in their lane until the finish line. No jumping a start or passing before the start finish line. If a green flag lap is not completed before a yellow comes out all cars should go back to their prior position except for any cars that are penalized, receive assistance or pit.
- 7. Mandatory Caution:** A caution will be displayed after 50 consecutive green flag laps up to lap 90.
- 8. Red Flag:** All cars must stop as quickly as safely possible when the red flag is displayed. Cars may go to the pits for crews to work on them, only after the spotter official has given them permission to do so. Cars pitting under red must restart at the tail of the field.
- 9. Black Flag:** Cars that receive the black flag must go to pit road immediately. If you do not go to pit road within 3 laps, your scoring will stop until the situation is rectified. Check with your spotter for guidance from race control.
- 10. Free Pass:** At the time the caution comes out, the first car behind the leader 1 lap down will be deemed to be the Free Pass (If free pass is the cause of the yellow then it would go to next car in line). Free pass will stay in their position throughout the caution period (Free Pass may pit if they elect to), until directed to pass the pace car or drop to the tail of the field and have your lap added manually. Free pass can choose at the choose cone. No free pass will be awarded in the last 10 laps.
- 11. Slow Cars:** Slow cars will be advised in the drivers' meeting which lane to utilize in the presence of lead lap cars during the race. Lapped cars that create problems for lead lap cars may be penalized. Lapped cars should let the leaders go by on the preferred lane and then resume racing. Lapped cars that are repeatedly passed without giving the preferred lane during the race may be penalized. Cars fighting to stay on the lead lap are not forced to yield to the leaders until they have been passed by the leader.
- 12. Scoring:** Transponders will be used for scoring. Teams must return the transponder to a scoring official before leaving pit area...There is a \$400 PENALTY for failure to turn in your transponder.
- 13. Spotters:** Spotters are required to be in the designated spotters stand during racing activities. Only one spotter per team is allowed in the spotter stand, no guest. Spotters must have the ability to listen to race control via a standard electronic scanner or dedicated radio at all times during the event. The frequency is 467.7875 Drivers should keep your spotter's patient and polite; spotters keep your drivers the same. Tower will be monitoring during the race. Spotters must be respectful to officials and other spotters at all times. If the spotter leaves or is removed from the spotters stand car will be parked.
- 14. Post-Race:** The top three finishers go to the front-stretch immediately following the completion of the race. Fourth and fifth go straight to tech. Other cars may be requested to go directly to tech. Driver must drive car to tech after victory lane.

*These procedures will be superseded by any procedures provided during the event.



Thank you for being a part of the North/South SLM Challenge



**Please support our partners that
help make this possible**

