



Racetrack Revival

COMPETITOR INFORMATION

NORTH WILKESBORO SPEEDWAY – AUGUST 12-13, 2022



SCHEDULE/EVENT INFO

Thursday, August 11th

4:00-7:00 - Hauler Parking

Friday, August 12th

10:00 AM – Hauler Parking

11:00 AM – Pit Credential and Driver Registration Opens

11:30 AM – Qualifying/Tire Selection Draw

12:00 AM - Super Late Model Tech Open

1:15 PM - Super Late Model Drivers Meeting

2:00 PM – 2:20 PM – Super Late Model Warm Up Session

2:30 PM - 3:00 PM - VCTS Practice #1

3:00 PM - 3:45 PM - Super Late Model Practice #1

3:00 PM - Grandstand Parking Opens

3:45 PM - 4:15 PM - VCTS Practice #2

4:00 PM - Grandstand Gates Open

4:15 PM - 5:00 PM - Super Late Model Practice #2

5:30 PM - Super Late Model Qualifying Tech

6:00 PM - VCTS Group Qualifying

7:00 PM - Super Late Model Qualifying

7:30 PM - Pre-Race Activities

8:00 PM - Racing Begins

VCTS 50 Lap Feature

Super Late Model 10 Lap Heat Races

Saturday, August 13th

3:00 PM - Pit Gate and Driver Registration Opens

3:00 PM - Grandstand Parking Opens

4:00 PM - Grandstand Gates Open

4:15 PM - Super Late Model Drivers Meetings

5:00 PM - 5:30 PM - VCTS Practice

6:00 PM - Super Late Model Pre-Race Tech

6:30 PM - VCTS Group Qualifying

7:30 PM - Pre-Race Activities

8:00 PM - Racing Begins

VCTS 50 Lap Feature

Super Late Model 75 Lap Feature

Parking & Pit Ticket Sales

- Hauler parking begins on Thursday from 4-7. Stage in lot on right side of the road leading into the pit area. **Please do not block driveway.** Hauler parking will resume at 10am on Friday.
- Pit ticket sales will be open on Friday from 11:00-until and Saturday from 3:00pm-until. Please fill out a team form and leave an open check for team members arriving separately.

Pit Stalls

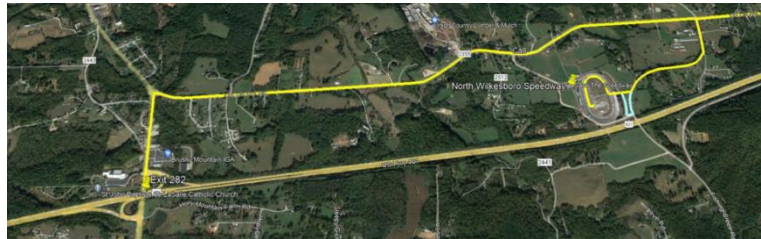
- Pit stalls will be first come first serve. If you need to park with someone arrive together **AND** let series/track know ahead of time.

Golf Carts

- Golf Carts/ATV's are allowed except on pit road. ATV pass required. Use of vehicles can be revoked for reckless use or blocking active areas. Limit one vehicle per team. Drivers must be atleast 16 years of age.
- **NO GOLF CARTS/ATV's ALLOWED ON HOT PIT ROAD.**

Contact Info

- Track Enterprises – 251-764-3200
- XR Events Ticket Sales – 615-254-1986
- Tim Bryant SSS Series Director – 850-217-0539
- Nicholas Rogers SSS Competition Director – 850-418-0559
- Glenn Luckett CRA/JEGS Series Director – 812-883-0455
- Eddie Chew CRA/JEGS Tech Director – 317-439-3014



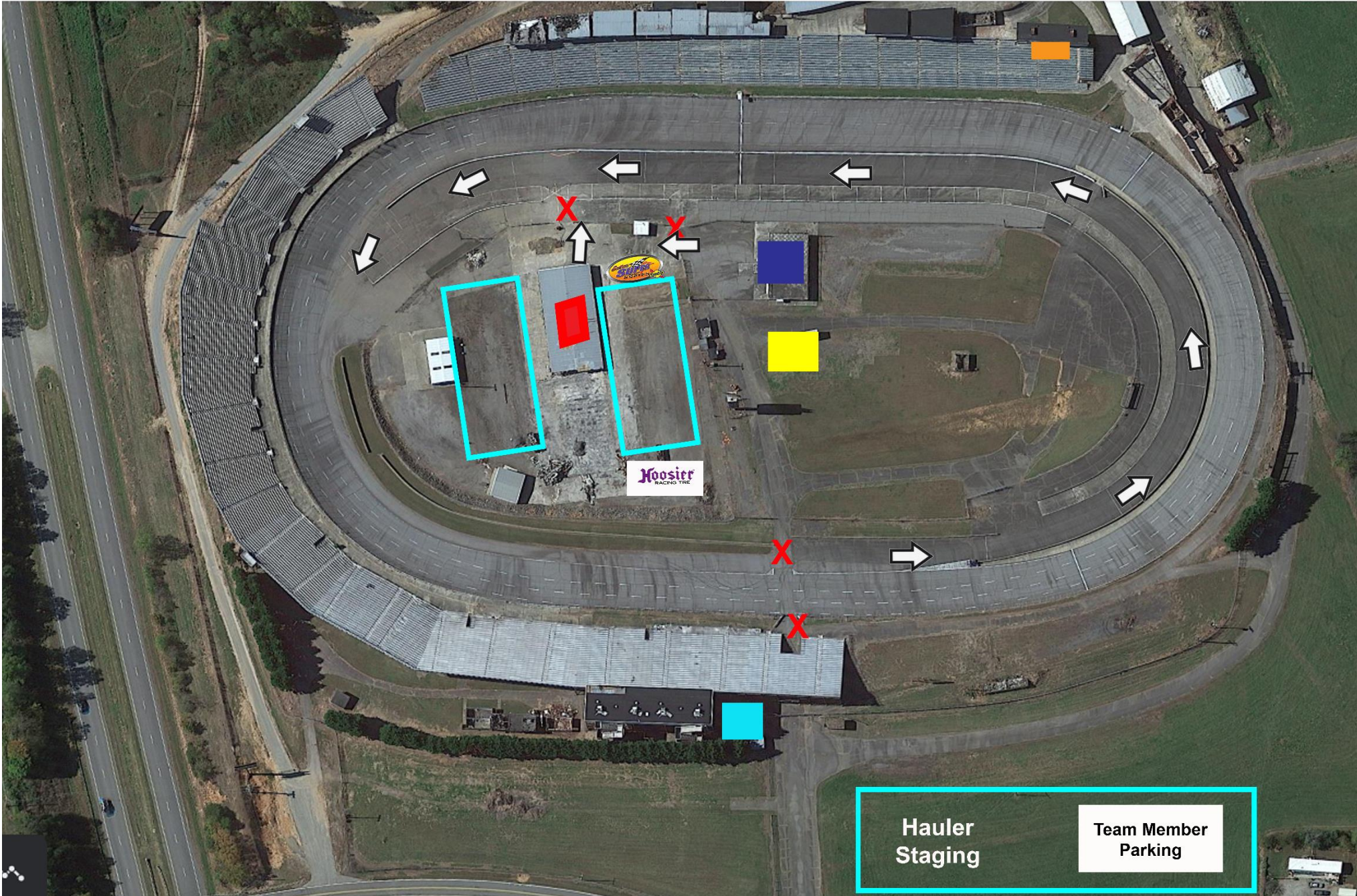
From the West – Take the Statesville Road Exit 282, North, (Bus Rt 421) for 0.44-Miles – Turn Right on Speedway Road (East) . – After 2.30-Miles turn Right (South) on Fishing Circle Road – Gate is on Right side of Road in 0.60-Miles

From the East – Take the Antioch Church Road Exit 277, North. Antioch Church Road will become Speedway Road. – In 2.90-Miles turn Left on Fishing Circle Road. – Gate is on Right side of Road in 0.60-Miles



TRACK SERVICES / FACILITIES MAP

- Concessions
- Tech
- Hoosier Racing Tire Tires/Impound
- X Entrance Gates
- Pit Tickets
- Spotters Stand
- Restrooms
- LM Parking
- Registration
- Traffic Flow
- SUNOCO Fuel Station



GENERAL PROCEDURES

- **NO CELLPHONES, SMART WATCHES OR BLUETOOTH DEVICES ALLOWED IN CARS AT ANYTIME OR THIS IS AN AUTOMATIC DISQUALIFICATION.**
- NO TAPE (ZERO) ALLOWED ON CAR EXCEPT GRILL SCREEN & FRONT BRAKE DUCTS.
- **PER THE 2022 RULEBOOK NO COOL DOWN UNITS OF ANY TYPE PERMITTED AND WILL BE SUBJECT TO A SEVERE PENALTY.**
- **ALL TECH ISSUES MUST BE FIXED AND MARKED OFF BY 5:00 ON FRIDAY OR A PENALTY OF THE SLOWEST OF THE TWO QUALIFYING LAPS.**
- ALL SUPER LATEMODELS WILL BE CONSIDERED UNRESTRICTED UNLESS YOU DECLARE DIFFERENTLY BEFORE QUALIFYING TECH STARTS.
- **Fuel will be available for purchase. No minimum purchase requirement for this event.**
- **ALL TIRES IN THE IMPOUND AREA WILL BE STACKED 4 HIGH OR YOU WILL LOSE THEM! YOUR ONLY ALLOWED A TIRE GAUGE, TIRE TAPE AND AIR HOSE IN THE IMPOUND AREA. IT'S MANDATORY THAT YOUR CAR NUMBER BE ON WHEELS WITH A DECAL, NO PAINT PENS ETC....**
- **MANDATORY SPOTTERS HAVE A SCANNER OR STAND-ALONE RADIO TO MONITOR RACE CONTROL ANYTIME CAR IS ON TRACK! ALL SPOTTERS THAT CAN NOT MONITOR RACE CONTROL WILL RESULT IN CAR BEING BLACK FLAGGED. NO GUESTS OR SMOKING WILL BE PERMITTED IN SPOTTERS STAND. Frequency is 461.2000.**
- **IF OFFICIALS OR SAFETY WORKERS ARE ON THE TRACK, NO SCUFFING TIRES NEAR THEM OR YOU WILL BE PARKED AFTER ONE WARNING.**
- ALL LEAD MUST BE SECURELY FASTENED AND PAINTED WHITE WITH CAR NUMBER ON 4 SIDES OF EACH PIECE. LEAD WILL BE INSPECTED POST RACE. IF NOT CORRECTLY PAINTED AND NUMBERED TEAM WILL RECEIVE UP TO A \$1500.00 FINE. FOR 1ST OFFENSE. LOST WEIGHT WILL RESULT IN A \$25.00 PER POUND FINE

TIRE PROCEDURES

- **DUE TO THE CURRENT TIRE SHORTAGE ISSUES TIRE SELECTION PROCEDURES HAVE BEEN CHANGED. PLEASE READ CAREFULLY.**
- **EACH TEAM IS ALLOWED TO PURCHASE ONE SET OF STICKER TIRES FOR 2ND & 3RD PRACTICE ON FRIDAY. TEAMS CAN BRING ONE SET FOR USE IN 1ST PRACTICE ONLY.**
- **TIRES WILL BE STACKED IN GROUPS OF 10 WITH A NUMBER. THE NUMBER YOU DRAW FOR QUALIFYING WILL BE THE TIRE GROUP YOU RECEIVE.**
- **STACKS WILL CONSIST OF 6 – 86 1/2", 2 - 85 1/2" & 2 - 85 1/4" TIRES. DUE TO LIMITED AVAILABILITY, THERE WILL BE MINIMAL OPTIONS FOR SWAPPING.**
- FRIDAY – TIRE DRAWING WILL BEGIN AT 11:30. ONE SET OF TIRES CAN BE MOUNTED AND REMOVED FOR PRACTICE. ONE RACE SET WILL BE MOUNTED AND HELD IN IMPOUND AND PUT ON IN PRE-QUALIFYING TECH. TWO RACE TIRES HELD TILL RACE
- ALL PRACTICE TIRES WILL BE MOUNTED BEFORE RACE TIRES ARE MOUNTED.

NOTES FOR FRIDAY AUGUST 12th

- **DRIVERS MEETING WILL BE HELD AT 1:15.**
- YOU WILL GET YOUR TRANSPONDER AND DRAW FOR QUALIFYING AND TIRE STACK SELECTION ON FRIDAY AT 11:30. IF YOU ARE PRE-ENTERED AND NOT AT THE TRACK A SERIES OFFICIAL WILL DRAW FOR YOU
- CARS MUST ROLL THRU TECH AT DESIGNATED APPOINTMENT TIME OR IT COULD RESULT IN A PENALTY OF THE SLOWEST OF THE TWO QUALIFYING LAPS UNLESS APPROVED OTHERWISE. MAXIMUM OF FOUR CREW MEMBERS PLUS THE DRIVER IN THE TECH AREA AT ANY TIME. ALL ISSUES MUST BE FIXED BEFORE 5:00.
- PRE-QUALIFYING TECH OFFICIALLY OPENS AT 5:30, ALL CARS ARE REQUIRED TO BE ON THE GROUND AT THAT TIME (UNLESS YOUR ON AN APPROVED MECHANICAL BY TECH) AND READY TO ROLL TO TECH OR FACE POSSIBLE PENALTY OF SLOWEST OF TWO LAPS. PLEASE WAIT UNTIL YOU ARE DIRECTED TO PROCEED IN ORDER TO PRE-QUALIFYING TECH LINE. YOU WILL HAVE TWO OPPORTUNITIES TO PASS TECH, BEFORE YOU ARE UNDER PENALTY OF SLOWEST OF TWO LAPS IN QUALIFYING. HAVE IGNITION BOX CLEANED WITH BRAKE CLEAN AND BAR SET WITH ALL TAPING DONE BEFORE PREQUALIFYING TECH. AFTER TECH NOTHING BUT AIR PRESSURE AND A MAXIMUM OF 4 CREW MEMBERS AND 1 DRIVER AT EACH CAR.
- QUALIFYING; DEAD LAP FIRST TIME BY THEN GREEN/WHITE/CHECKERED. YOU WILL BE DIRECTED TO IMPOUND WHERE TWO CREW MEMBER CAN REMOVE TAPE, CHECK AIR PRESSURE, AND CHECK STAGGER WITH A STAGGER STICK ONLY.
- CARS WILL BE IMPOUNDED UNTIL HEAT RACE. YOU WILL HAVE TIME TO SET AIR PRESSURE AND PUT ANY DRIVERS AIDS IN BEFORE HEAT RACES.
- FOLLOWING HEAT RACES ALL TEAMS WILL TURN IN TIRES TO IMPOUND AREA.

NOTES FOR SATURDAY AUGUST 13th

- **MANDATORY DRIVERS/CREW CHIEF/SPOTTERS MEETING AT 4:15. ANY DRIVER NOT PRESENT OR NOT ON TIME WILL FACE PENALTY.**
- **ALL CARS WILL TECH IN STARTING ORDER BEGINNING AT 6:00. CARS SHOULD BE ON GROUND AND READY TO ROLL TO TECH WHEN DIRECTED TO DO SO.**
- **YOU MUST PIT ON FRONT PIT ROAD. PIT STALLS WILL BE ASSIGNED BY STARTING POSITION. CHANGES MUST BE WORKED OUT BY TEAMS AND REPORTED TO TECH**
- RACES IS (6) TIRES MAX, YOU CAN HAVE TWO LEFT SCUFFS IN YOUR PITS BUT FLATS MUST BE INSPECTED AND APPROVED BY AN OFFICIAL
- **THIS EVENT WILL USE A CONTROLLED CAUTION ON OR AROUND LAP 40 FOR TEAMS TO TAKE RIGHT SIDE TIRES. SEE CONTROLLED CAUTION PROCEDURES BELOW**
- **TOP 3 AFTER RACE TO VICTORY LANE, 4TH AND 5TH TO SCALES, DRIVER MUST STAY WITH CAR AND DRIVE TO TECH STATION UNTIL HE SCALES**

RACETRACK REVIVAL RACE PROCEDURES

Event: The race is 10/75 green flag laps. If red flag is thrown once the leader has taken the white flag there will be a green, white, checker to finish. The event is complete after three g/w/c attempts.

Initial Start: Flagman starts the race. Cars must stay in their lane until the start finish line. No jumping a start or passing before the start finish line. If a green flag lap is not completed on the initial start, there will be a total restart with all cars back in their original starting position except for any cars that are penalized, receive assistance or cars that pit.

Yellow Flag: There will be no racing back to the caution. When the yellow flag is displayed, all cars must slow to a caution pace and bunch up as quickly as safety allows so safety crews can work on track. All cars must **get single file and stay single file. No scuffing around workers on track.**

You will receive one warning, any further issues you will be parked for remainder of event.

Cars Involved in the Caution: If you are involved, spin, slowed or your progress is disrupted by the incident, you will be positioned where you rejoin or blend back into the field – NOTE: the incident must play itself out before the order is set. Any discrepancies in line up will be determined by Race Control or may revert to last completed green lap. Rough driving can result in penalties including being sent to the tail of the field or possible disqualification. If you stop on track or create a caution you will lose a minimum of two laps naturally or by penalty.

Pitting Procedure: You must stay single file behind the pace car during the cautions unless you are coming to the pits. Please see controlled caution procedures for detailed instruction. Only traditional tools and procedures may be used during a pit stop. Maximum of 5 crew members allowed to service car. **Crew cannot go to their car until it is completely stopped in their pits!**

Pit Road Speed: The pit road speed limit is 25mph, if a car goes over the limit, they will be black flagged for a stop and go penalty. Pit road speeds will be enforced with radar guns. Cars may not pass the pace car on track at any time (unless directed to do so by tower)

Red Flag: All cars must stop as quickly as safely possible when the red flag is displayed. Cars may go to the pits for crews to work on them, only after the officials have given them permission to do so. Cars pitting under red must re-start at the tail of the field.

Black Flag: Cars that receive the black flag must go to pit road immediately. If you do not go to pit road within 3 laps, your scoring will stop until the situation is rectified. Check with your spotter for guidance from race control.

Restart: Restart Line-up will be lead lap cars that did not pit followed by lead lap cars that pitted and returned in allotted time. Lap cars will line up behind lead lap cars followed by cars under penalty with lucky dog on the tail. Restarts will always take place in the box coming off of turn 4. The restarts will be double file with lead lap cars in front of lapped cars in the order the cars were running on the track. Cars will double up as they reach the finish line when given the one to go signal in the order they are running. Leader gets choice of inside or outside, everyone from third back lines up how they are running. Once pace car leaves the field the leader can steadily increase speed until the box. Leader must fire first once in the box. No slowing, weaving, brake checking or decrease in acceleration once the pace car leaves the field. Cars must stay in their lane until start finish line. No jumping a start or passing before the start finish line. If a green flag lap is not completed before a yellow comes out all cars should go back to their prior position except for any cars that are penalized, receive assistance or pit.

Wave Around: At the end of any caution period, any cars that are at the tail of the lead lap, behind the pace car but in front of the race leader will be “Waved Around” to pass the pace car and return

to the tail of the lead lap cars, thus ensuring that the leader of the race will always start the race at the head of the field. **Cars using the “Wave Around” cannot pit during that caution period.**

Lucky Dog: At the time the caution comes out, the first car behind the leader 1 lap down will be deemed to be the Lucky Dog (as long as they are not the cause of the yellow). The Lucky Dog will stay in their position throughout the caution period (Lucky Dog may pit if they elect to), until directed to pass the pace car or drop to the tail of the field and have your lap added manually. **Lucky Dog must always restart on the tail of the field.** No Lucky Dog will be awarded in the last 10 laps of the race.

Slow Cars: Slow cars must stay on the bottom in the presence of lead lap cars during the race. Lapped cars that create problems for lead lap cars may be penalized. Lapped cars should let the leaders go by on the outside and then resume racing. **Lapped cars that are repeatedly passed on the inside during the race may be penalized.** Cars fighting to stay on the lead lap are not forced to yield to the leaders until they have been passed by the leader.

Scoring: Transponders will be used for scoring. Teams must return the transponder to a scoring official before leaving pit road...There is a **\$400 PENALTY** for failure to turn in your operable transponder.

Spotters: Spotters are required to be in the designated spotters stand during racing activities. Only one spotter per team is allowed in the spotter stand, no guest. Spotters must have the ability to listen to race control via a standard electronic scanner or dedicated radio at all times during the event. Drivers should keep your spotter's patient and polite; spotters keep your drivers the same. Tower will be monitoring spotters during the race. Spotters must be respectful to officials and other spotters at all times. If spotter leaves or is removed from the spotters stand you will be parked.

Post-Race: The top three finishers to the front-stretch immediately following the completion of the race. Fourth and fifth go straight to tech. Other cars may be requested to go directly to tech.

Controlled Cautions: This event will use a Controlled Caution at or around lap 40 for teams to take two tires. **You can only take your sticker tires during the controlled caution unless for an approved flat.** Controlled Caution will consist of a 3-Lap NON-COUNTING grace period. Teams pitting under the Controlled Caution will not lose a lap as long as they return to the track in the designated 3-Lap grace period. Pace car will pick up field in turn 2. Pits are closed until lineup is established. Once lineup is established race control will announce pit road open next time and pit open flagman will show green. You can enter pit road when you get to entrance. Do not advance. That 3-lap grace period is only the first three laps that pit road is open after the cars have been brought to pit road. After the grace period, cars will lose positions to other cars that pitted. When pitting under the Controlled Caution, the cars that pit the first time by will return to the track in the same order they were scored running in the race prior to coming to pit road, relative to the other cars that pitted, and will line up behind any cars that did not pit, as long as they return to the track within the stated 3 lap window. Any car that returns to the track AFTER that 3-lap window will not get their position back. Any car that pits and does not return to the track prior to the field receiving the “one to go” signal must restart at the tail of all cars.



Thank you for being a part of the Racetrack Revival



Please support our partners that help make this possible

